

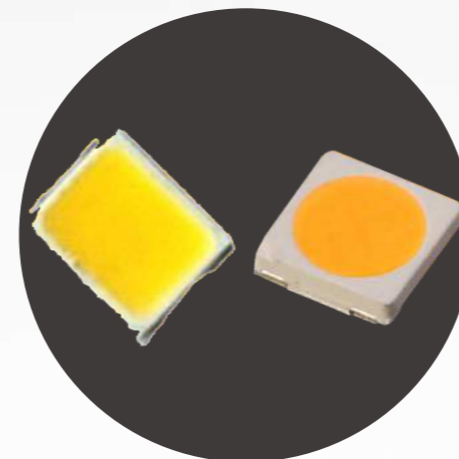


LED TRI-PROOF LIGHT

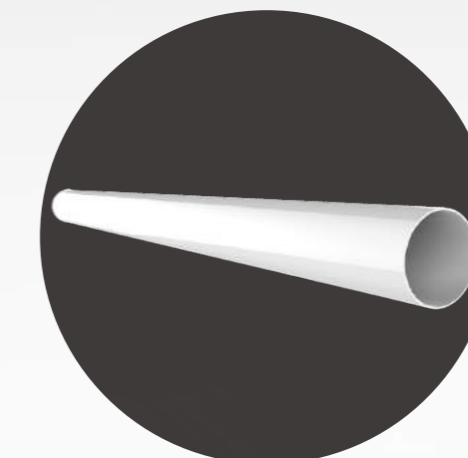
Main Parts



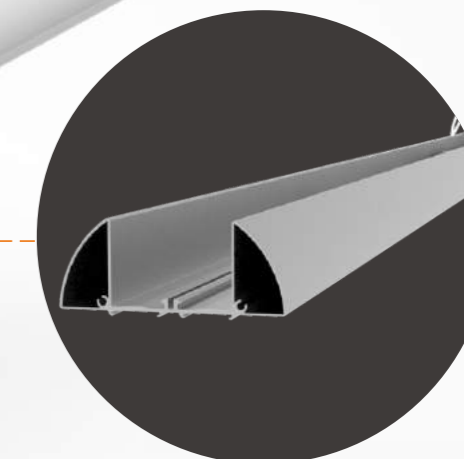
End cap



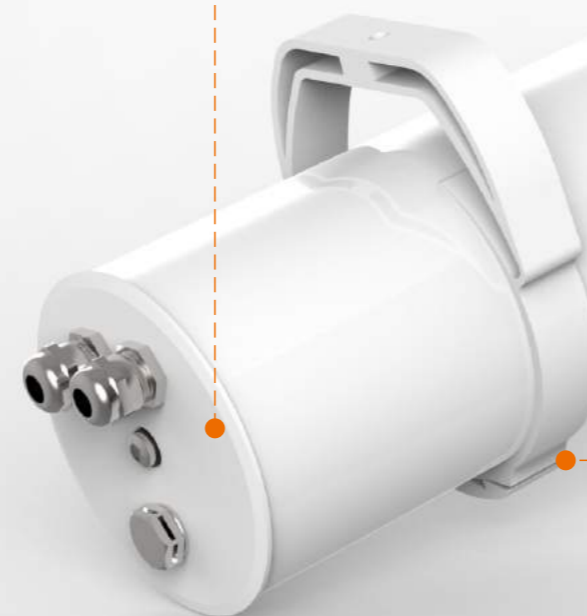
High efficiency LED



PC/PMMA diffuser
(clear/ Frosted)

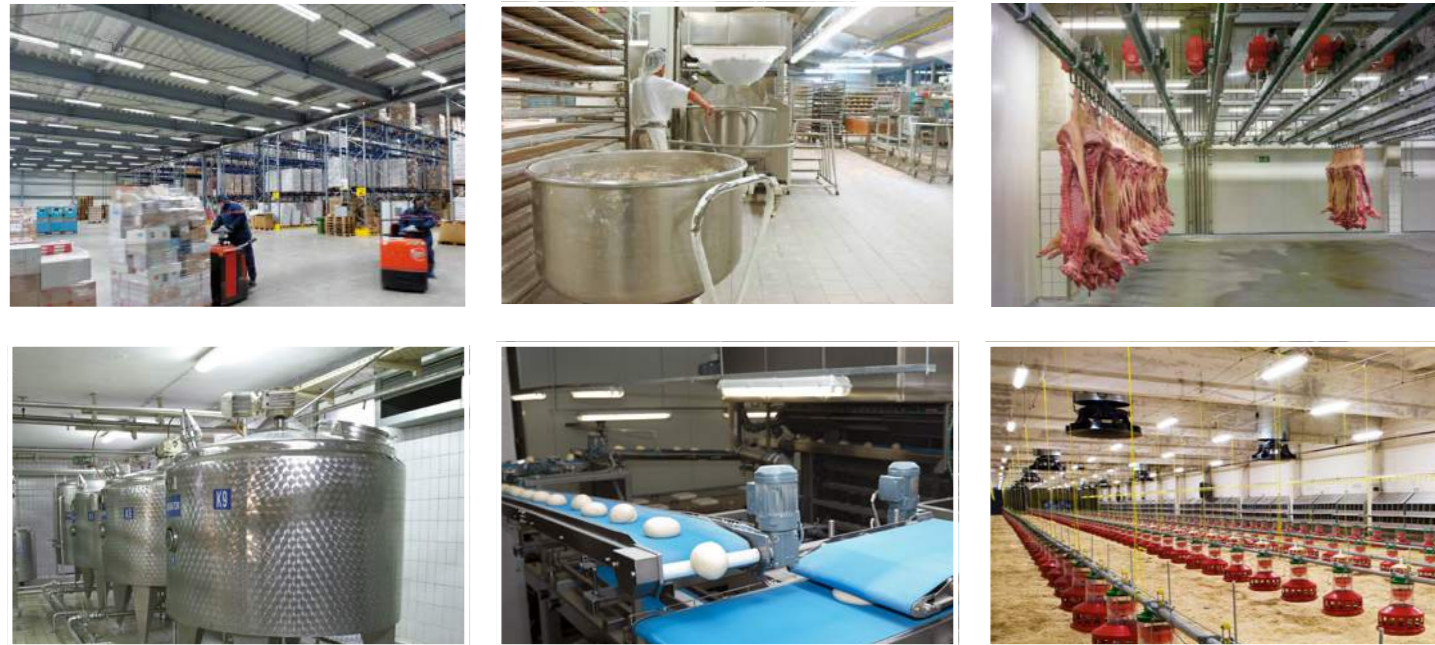


Heat dissipation housing



Application area

- >Car washes
- >Car parks
- >Meat process
- >Poultry plants/Farm
- >Grocery stores
- >Dairies
- >Food process
- >Low temperature storage



Main features

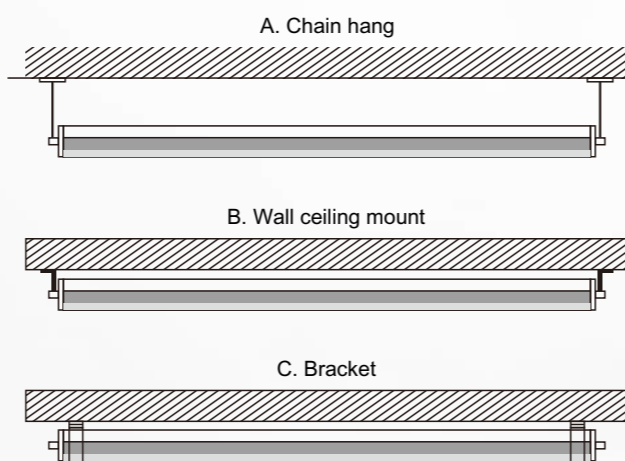
Ingress protection:
High protection grade IP 67/68
Applicable for washing by hot water IP69K
Mechanical strength: Impact Resistance
Grade IK08-10 in case of deliberately sabotage.
Glass parts excluded

UV resistance, anti-UV
Ammonia resistance
Corrosion resistance
High Color rendering index : CRI≥80, CRI 90 is optional

IP68 Water Proof

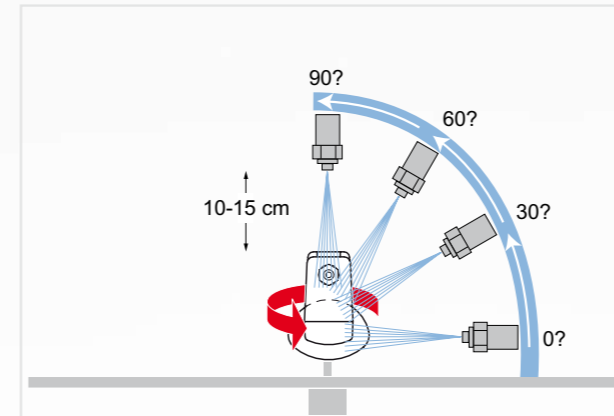


Different installation accessories



IP 69K

HIGH PROTECTION RATING IP 69K AND RESISTANCE AGAINST CLEANING AGENTS
The high protection rating of the luminaires allows cleaning at high pressure up to 100 bar and with up to 80 °C hot water and a variety of cleaning agents, alongside good chemical resistance.



> Diagram of protection rating testing IP 69K



> High-pressure cleaning of housing cover with 100 bar



Specifications

Diameter	φ 100mm			φ 70mm			φ 48mm		
Length	0.6M	1.2M	1.5M	0.6M	1.2M	1.5M	0.6M	1.2M	1.5M
Power	24W	50W	80W	20W	35W	45W	12W	24W	32W
Luminous Efficiency	130 lm/W								
CRI	80								
Color temperature	3000K,4000K,5000K								
IP Rating	68								
IK Rating	09/10								
Power Factor	0.9								
Input voltage	100-277V								
Electrical protection rating	Class I								
Design life	50000H								
design standards	CE / CB/ RoHS / IFS / NSF								

